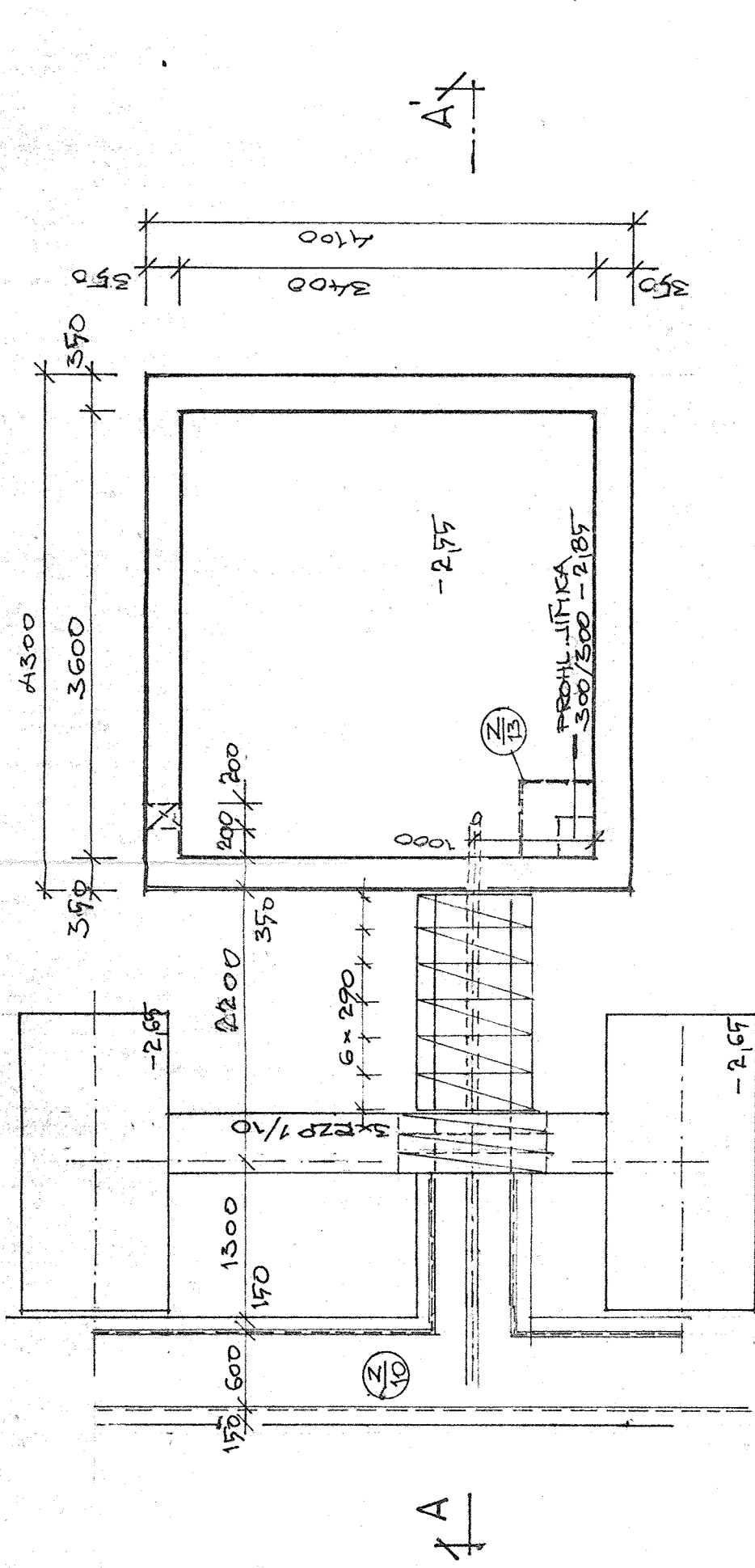
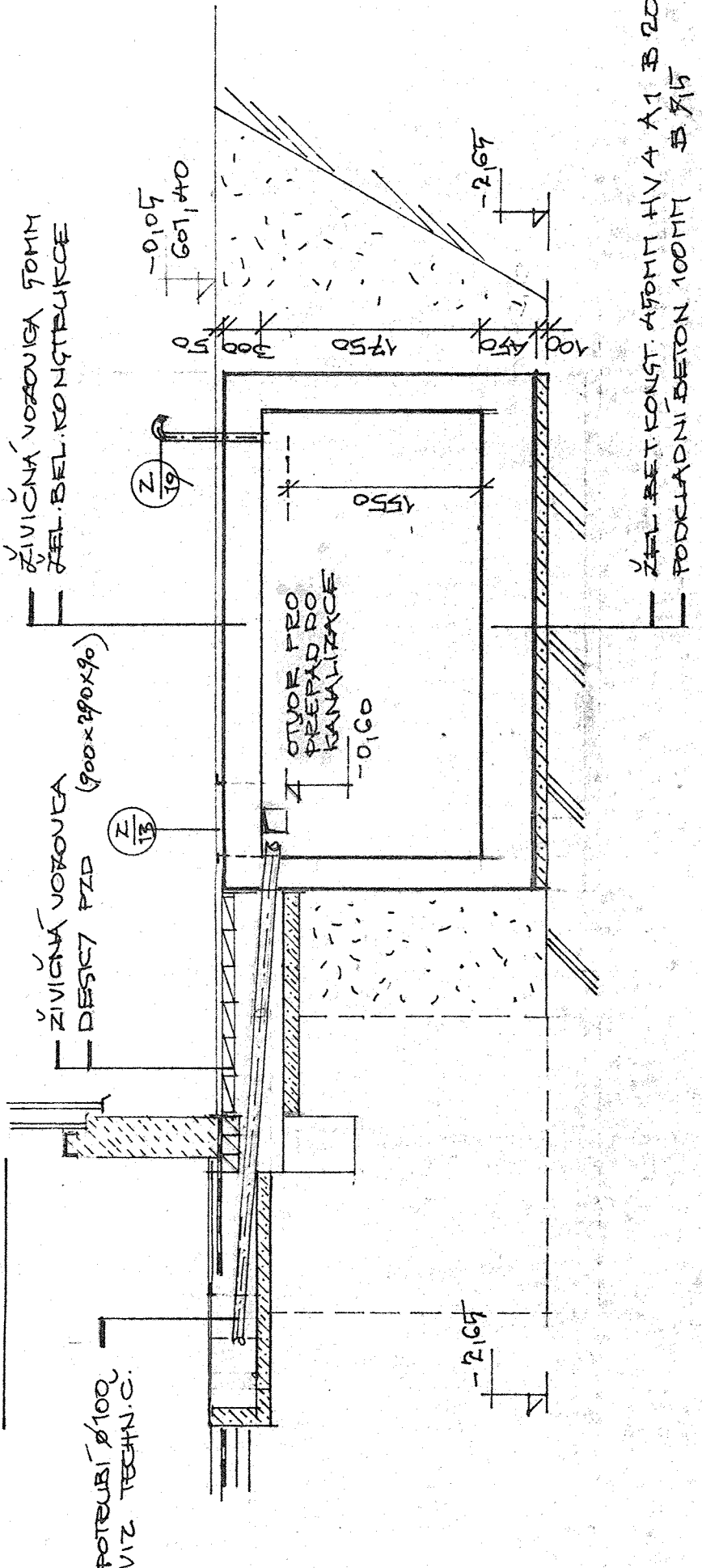


PŮDORYS VYCHLAZOVACÍ JÍMKY

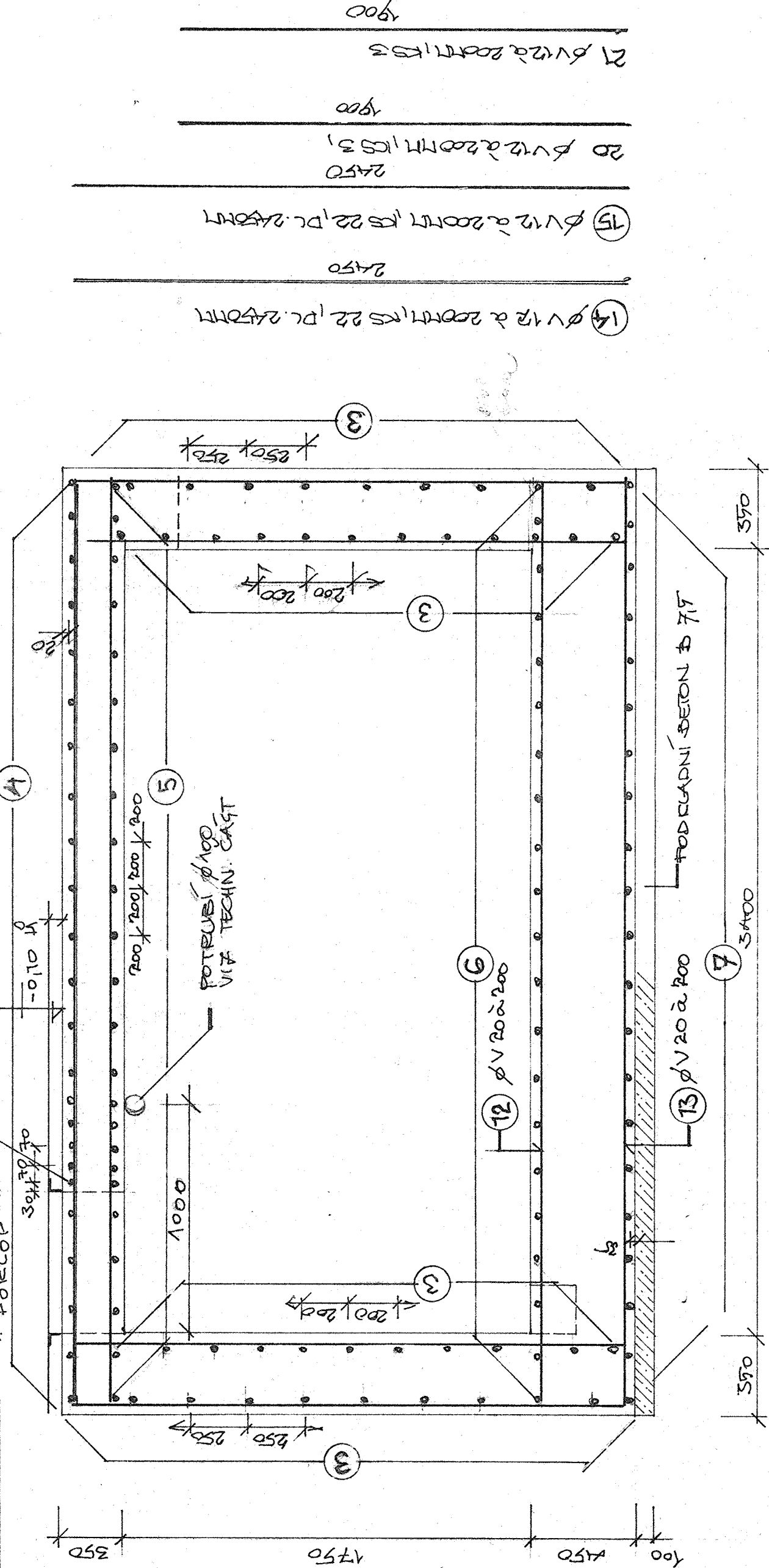


ŘEZ A-A'



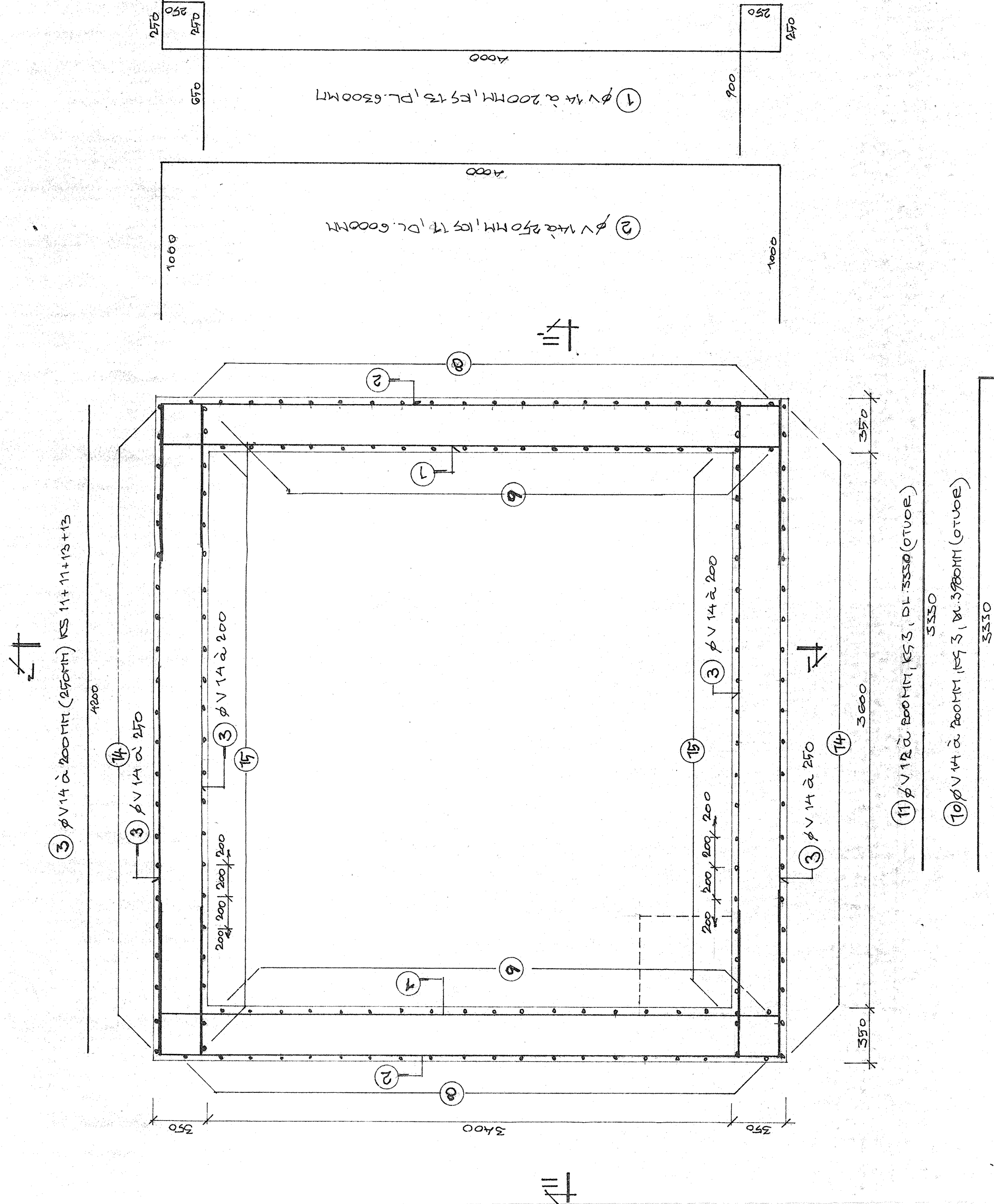
- | | |
|---|------------|
| <p>17) $\phi \vee 12 \wedge 200TH, K5.3, 12L.34200TH$</p> <p>28760</p> | <p>553</p> |
| <p>18) $\phi \vee 14 \wedge 200TH, K5.3, 12L.41070TH$</p> <p>34260</p> | <p>553</p> |
| <p>16) $\phi \vee 14 \wedge 200TH, K5.25, 12L.5300TH$</p> <p>24200</p> | <p>553</p> |
| <p>17) $\phi \vee 12 \wedge 200TH, K5.125, 12L.40000TH$</p> | <p>553</p> |

PŘÍČNÝ ŘEZ 1-1'



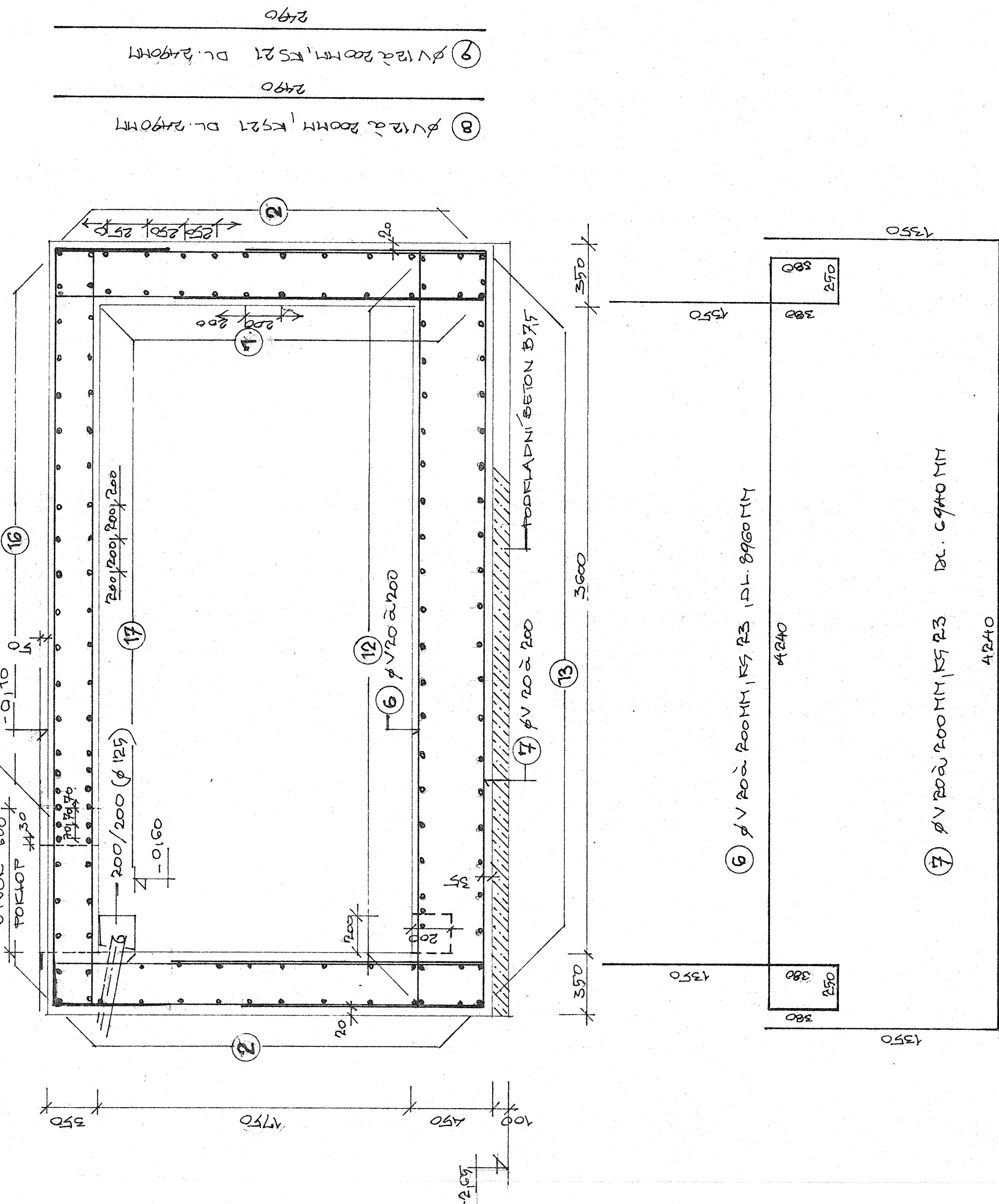
- | | |
|--|--|
| 0044 | <div> <div>255</div> <div>255</div> </div> |
| <div> <div>255</div> <div>255</div> </div> | <div> <div>255</div> <div>255</div> </div> |

PŮDORYSNÝ ŘEZ



- ⑪ $\phi \vee 12 \dot{\alpha} 200 \text{ Hm}, 1553, \text{DL } 3330 (\text{OTUOE})$
5330

PODÉLNÝ ŘEZ 11-11'



- ⑦ ØV 200x200 MM, K5 Z3 DL. C940 MM 4240

VÝPIS VÝZTUŽE

ORD	PROF	WEEK	DEL.	# 12	# 14	# 20
1	14	13	G 30	75.0	82.0	
2	14	13	G 0	78.0	78.0	
3	14	10	A 2		801.6	
4	20	24	574			161.0
5	12	19	A 24	123.0		
6	20	23	816			206.0
7	20	23	594			157.6
8	12	21	247	142.3		
9	12	21	249	142.3		
10	14	3	823		10.0	
11	12	3	398	14.0		107.1
12	20	22	815			447.4
13	20	22	617			
14	12	22	245	53.9		
15	12	22	249	53.9		
16	14	27	713		132.5	
17	12	25	110	100.1		
18	14	3	261		12.21	
19	12	3	342	10.26		
20	12	3	19	5.7		
21	12	3	19	5.7		
DIECK JEON 1 V 11						
VAKA JEON 1 V 12						
VAKA JEON 1 V 13						
VAKA CELKEM						
				469.6	676.51	801.1
				0.69	1.21	2.47
				399.5	810.33	2106.7
					3.3247	40

BETON HV 4-A1 B 20

OCCEL 10 425 (φV)

KRETI VĚTUŽE - SP. VĚTUŽ DNO 35 MM
OSTATNÍ VĚTUŽ - 40 MM

OSTATNÍ VĚTUŽ-POHM